

Fashion Enter Organisational Chart

Jenny Holloway
CEO

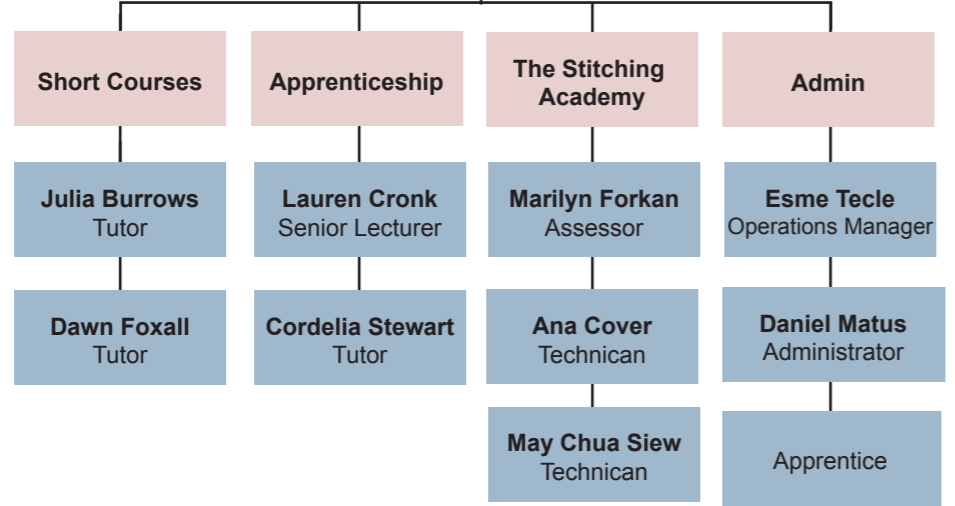


Caroline Ash
Director

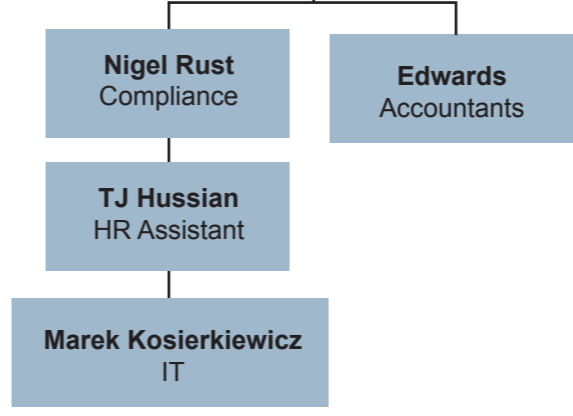
Jennifer Sutton
Director

The Fashion Technology Academy

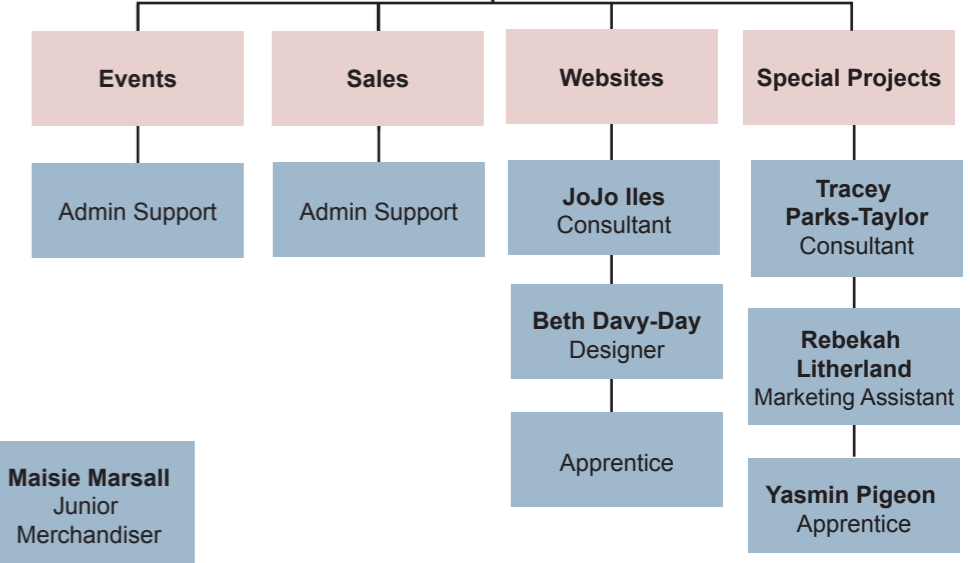
Joy McCann
Head of Learning



HR



Sales and Marketing



Production

Admin

Anna-Maria Michael (Merchandiser)

Maisie Marsall (Junior Merchandiser)

Chris Toumba
Factory Manager

